

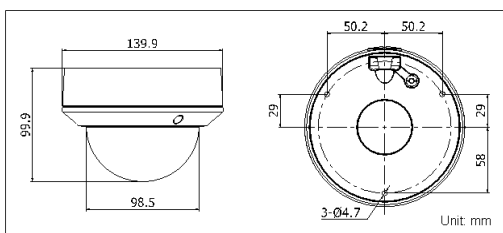
DS-2CD2732F-I(S) 3.0MP VF IR Dome Network Camera



Key features

- 3 megapixel (2048 x 1536) high resolution
- Full HD1080p real-time video
- IR LEDs: up to 20m
- DWDR & 3D DNR & BLC
- Support on-board storage (up to 64GB)
- (-S) Audio I/O, Alarm I/O
- IP66
- Vandal-proof

Dimensions



Accessories



DS-1238ZJ
Pendant Mount
Aluminium Bracket



DS-1256ZJ
Wall Mount
Aluminium Bracket
with gang box

| DS-2CD2732F-I (S) | |
|-----------------------------|---|
| Camera | |
| Image sensor | 1/3" progressive scan CMOS |
| Min. illumination | 0.07 lux@F1.2, AGC on 0.1 lux@F1.4, AGC on 0 lux with IR |
| Shutter time | 1/25s (1/30s) ~ 1/100,000s |
| Lens | 2.8 ~ 12mm @ F1.4, Angle of view: 98° ~ 30.5° |
| Angle adjustment | Pan: 0° ~ 355°, tilt: 0° ~ 75°, rotation: 0° ~ 355° |
| Lens mount | Φ14 |
| Day & night | ICR |
| Digital noise reduction | 3D DNR |
| Wide dynamic range | Digital WDR |
| Backlight compensation | Yes, zone configurable |
| Compression standard | |
| Video compression | H.264 / MJPEG |
| H.264 compression profile | Main profile |
| Bit rate | 32 Kbps ~ 16 Mbps |
| Audio compression (-S) | G.711 / G.726 |
| Audio bit rate (-S) | 64Kbps (G.711) / 16Kbps (G.726) |
| Image | |
| Max. image resolution | 2048 x 1536 |
| Frame rate | 50Hz: 12.5fps (2048 x 1536), 25fps (1920 x 1080), 25fps (1280 x 720) 60Hz: 15fps (2048 x 1536), 30fps (1920 x 1080), 30fps (1280 x 720) |
| Image settings | Saturation, brightness, contrast adjustable through client software or web browser |
| Network | |
| Network storage | NAS |
| Alarm trigger | Motion detection, tampering alarm, network disconnect, IP address conflict, storage exception, storage error |
| Protocols | TCP/IP, ICMP, HTTP, HTTPS, FTP, DHCP, DNS, DDNS, RTP, RTSP, RTCP, PPPoE, NTP, UPnP, SMTP, SNMP, IGMP, 802.1X, QoS, IPv6, Bonjour (SIP optional) |
| System compatibility | ONVIF, PSIA, CGI |
| General functionalities | Dual stream, user authentication, watermark |
| Interface | |
| Communication interface | 1 RJ45 10M / 100M Ethernet port |
| On-board storage | Built-in Micro SD/SDHC/SDXC card slot, up to 64 GB |
| General | |
| Operating conditions | -30 °C ~ 60 °C (-22 °F ~ 140 °F), humidity 95% or less (non-condensing) |
| Power supply | DC12V ± 10%, PoE (802.3af) |
| Power consumption | Max. 5.5W |
| Impact protection | IEC60068-2-75Eh, 50J; EN50102, up to IK10 |
| Ingress protection level | IP66 |
| IR range | Up to 20m |
| Dimensions | Φ 140 x 99.9 mm (Φ 5.51" x 3.94") |
| Weight | 1000g |

Available models

DS-2CD2732F-I, DS-2CD2732F-IS

* -S: 1-ch audio I/O interface and 1-ch alarm I/O interface.

* Product picture and technical specs subject to change without previous notice.
For further information, please contact our local sales representatives.