

# MORPHOMANAGER

SEAMLESS INTEGRATION OF BIOMETRICS AND ACCESS CONTROL



Combined with Morpho biometric terminals, MorphoManager provides a seamless, comprehensive solution for Access Control and Time & Attendance applications. It offers easy configuration, group-based settings, centralized management and detailed reporting.

- Enroll fingerprint, finger vein/print and 3D facial templates in a single system
- Encode MIFARE®, DESFire® and iClass® smartcards
- Manage up to 100,000 users and 5,000 biometric terminals
- Use as standalone application or integrated with leading access control platforms

# MORPHOMANAGER

## SEAMLESS INTEGRATION OF BIOMETRICS AND ACCESS CONTROL

### USER MANAGEMENT

- Manage up to 100,000 users in database
- Enroll demographics, photo, fingerprint/finger vein data (up to 10 fingers) and 3D face data
- Maximize data acquisition quality and overall biometric system performance using sensors, coding algorithms and enrollment processes designed by the World #1 in biometrics
- Allocate Operator roles and privileges
- Define User access time slots and group assignment
- Encode MIFARE®, DESFire® and iClass® contactless cards
- Print identity cards from customizable templates

### DEPLOYMENT OPTIONS

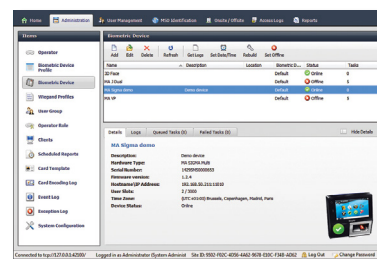
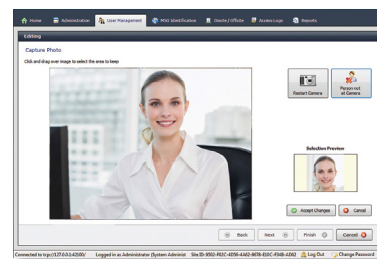
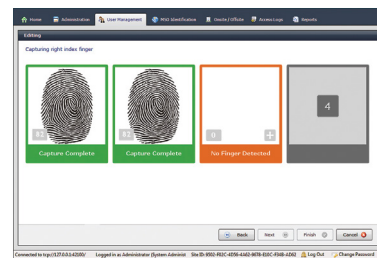
- Save time and money with reduced setup time, intuitive interface and field-proven workflows
- Single PC or advanced Client/Server configuration
- MorphoManager includes powerful integration into the following leading access control platforms<sup>(1)</sup>:
  - AMAG Symmetry
  - Blackboard Transact
  - Brivo ACS
  - Cisco CPAM
  - ControlSoft Lite/Pro
  - DSX WinDSX
  - Galaxy Control Systems Galaxy
  - Honeywell WIN-PAK & ProWatch
  - Identocard Premisys
  - Infinias Intelli-M
  - Inner Range Integriti
  - Johnson Controls P2000
  - Kantech Entrapass
  - Keyscan System VII
  - Lenel OnGuard
  - Maxxess eFusion
  - Open Options DNA Fusion
  - Paxton Net2
  - S2 Netbox
  - Schneider Electric Continuum
  - Siemens SiPass
  - Software House C-Cure 9000
- MorphoManager can also operate standalone, or be interfaced with other Access Control and Time & Attendance systems<sup>(2)</sup>

### TERMINAL ADMINISTRATION

- Connect and configure up to 5,000 biometric readers via LAN, WAN or Wi-Fi
- Integrate multiple biometric modalities (fingerprint, finger vein and face) and multiple recognition factors (biometrics, card and PIN) in a single system
- Group terminals according to security perimeters within the installation
- Select conventional access control mode or advanced time & attendance features
- Set Wiegand or closed contact output

### REPORTING & BACKUP TOOLS

- Retrieve in real-time and store up to 1,000,000 access logs
- User Onsite/Offsite reporting
- Accurate time recording
- Various reporting options available to display information about:
  - User activity
  - Terminal activity
  - Group activity
- Automatic export of transaction history for import into payroll packages
- Database backup and copy tools



## SPECIFICATIONS

### HARDWARE CONFIGURATION

- Processor: Dual core CPU
- RAM: 4 GB
- Ports: 3 USB ports (USB 3.0 required for MorphoWave™ Desktop)
- Network: 100Mbps Ethernet port required for client/server connections
- Camera: any USB webcam

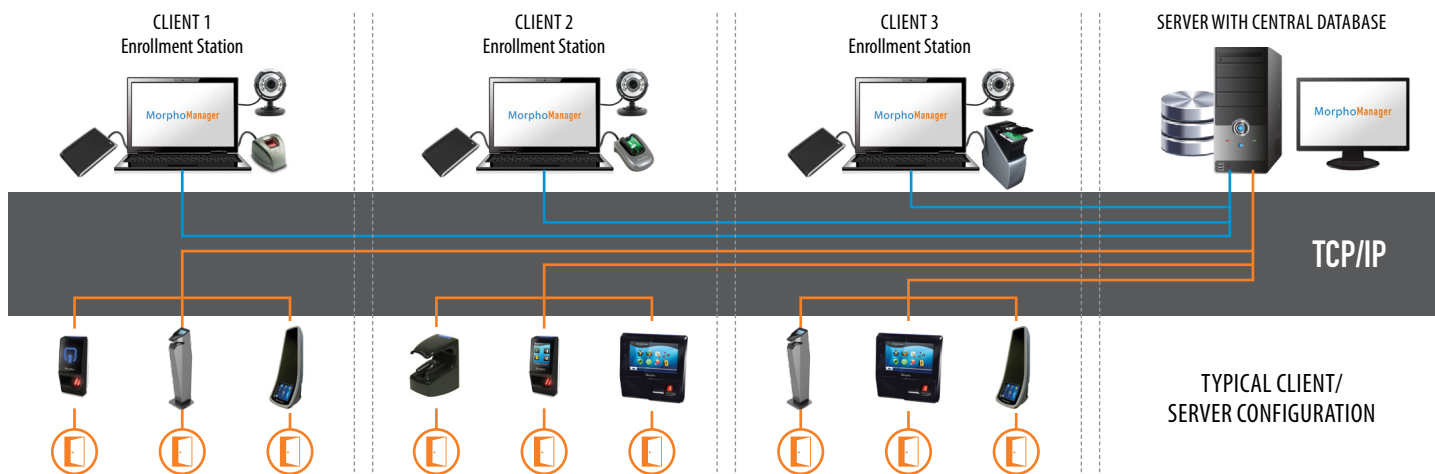
### OPERATING SYSTEMS

- Windows XP SP3 / Vista SP1 / 7 / 8 / 8.1
- Windows Server 2003 R2 / 2003 R2 SP2 / 2008 / 2008 R2 / 2012 / 2012 R2

### DATABASE

- SQL Server (2005 or later)
- SQL Server Compact Edition 4.0

PACK OPTIONS	USB Desktop Enrollment Scanner (included)	Recommended for
MorphoManager LIGHT	MSO 1300	Single PC administration of a limited number of terminals (fingerprint and facial)
MorphoManager PRO	MSO 300	Client/Server administration of medium to large installations (fingerprint and facial terminals)
MorphoManager PRO Wave	MorphoWave™ Desktop	Single PC or Client/Server administration of installations including touchless fingerprint technology terminals
MorphoManager MULTIMODAL	FINGER VP Desktop	Single PC or Client/Server administration of installations including multimodal vein/print terminals



<sup>(1)</sup> MorphoManager is compatible with the platforms presented here at time of publication. This list is continually being enlarged to incorporate new platforms.

<sup>(2)</sup> Contact your local representative for further details.

## Morpho

Phone: +33 (0)1 58 11 73 42 - Fax: +33 (0)1 58 11 25 50 - [www.morpho.com](http://www.morpho.com) - [www.biometric-terminals.com](http://www.biometric-terminals.com)  
 Registered Office: 11, boulevard Gallieni - 92130 Issy-les-Moulineaux - FRANCE  
 Société par actions simplifiée au capital de 159.876.075 euros - 440 305 282 RCS Nanterre

