

◇ XProtect Essential

Basic IP video surveillance



XProtect Essential is affordable open platform video surveillance software for businesses requiring basic, yet effective surveillance. With advanced video search capabilities it is easy to examine and find relevant video evidence, making XProtect Essential ideal for installations that primarily capture video recordings of incidents and reactively conduct investigations. The automatic configuration wizard removes time delays and challenges during initial deployment making it easier than ever to set up.

◇ Minimize risk

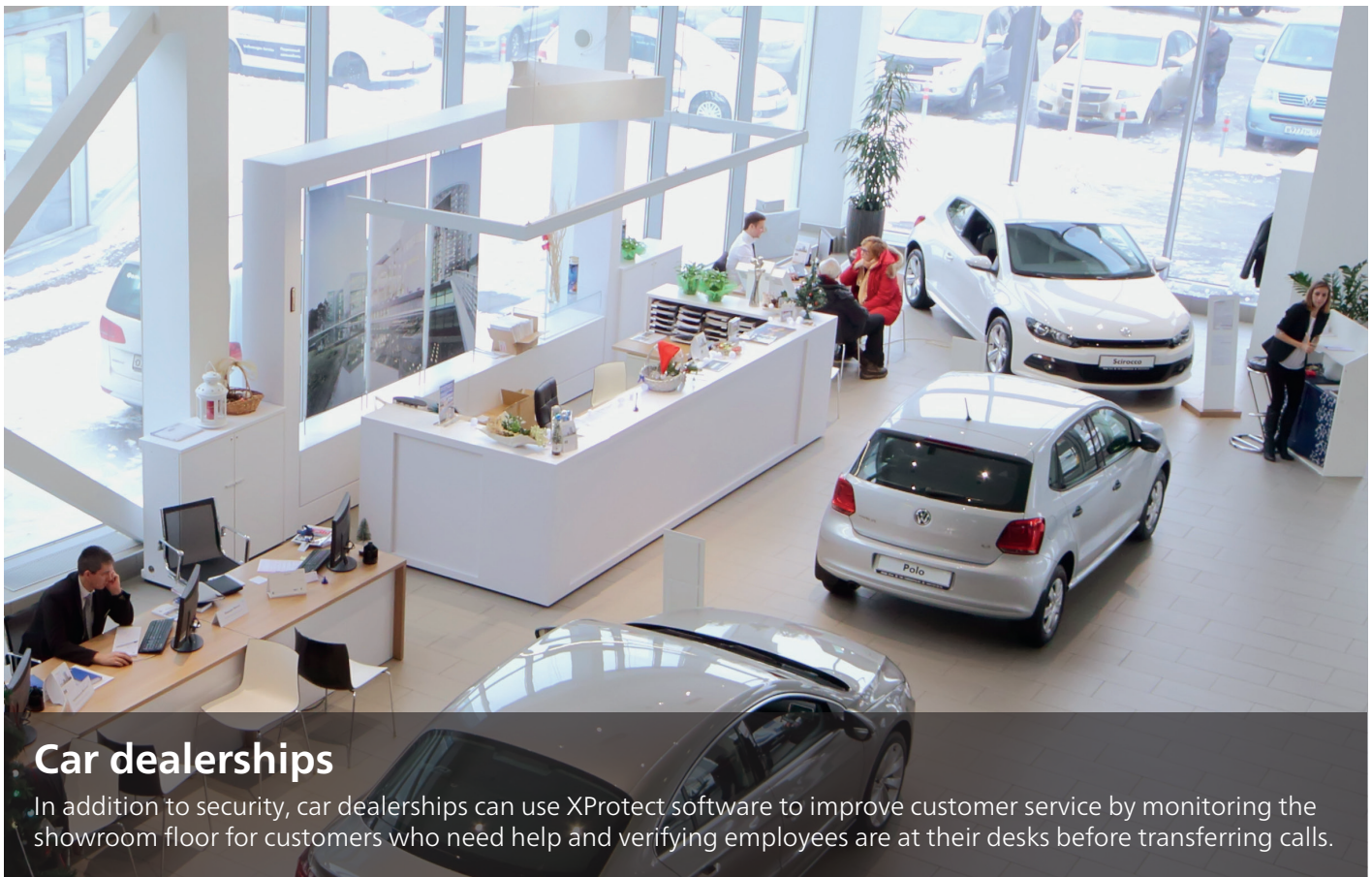
The system is pre-configured to record video when motion is detected, ensuring users have video footage of potential incidents.

◇ Access anywhere

XProtect Essential is compatible with all three XProtect clients, giving users access to their video surveillance system from anywhere at any time.

◇ Find and export evidence

The Smart Search feature allows users to search for changes in one or more areas of video from a specific camera to quickly locate video footage. Video evidence is easily exported or shared through a media player, email or MMS.



Car dealerships

In addition to security, car dealerships can use XProtect software to improve customer service by monitoring the showroom floor for customers who need help and verifying employees are at their desks before transferring calls.

What's new in 2014

One-layer interactive map

XProtect Smart Client users get a graphical overview of the entire installation providing visual assistance to identify and navigate through different cameras and views. Users of all skill levels can easily locate and process video recordings using the intuitive map feature.

Update notifications

Users are automatically notified about new software versions, ensuring they are always aware of the latest product updates, capabilities and bug fixes.

Simple upgrade

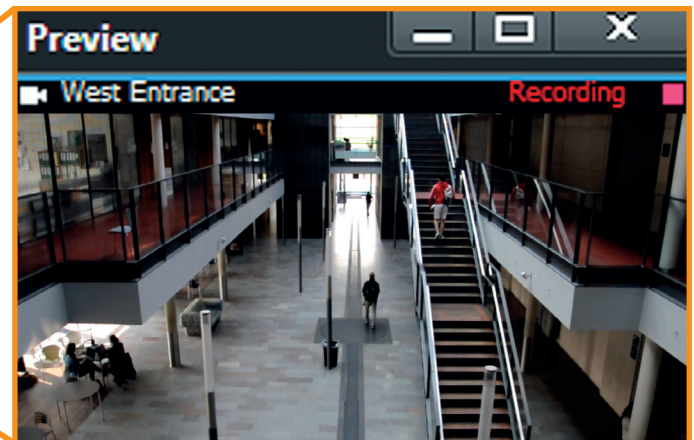
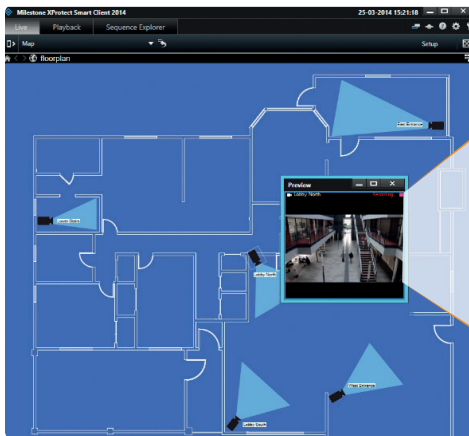
New licensing flow significantly reduces steps and time involved when upgrading to a more advanced Milestone solution and when updating the VMS to the latest version available.

Automatic motion detection adjustment

Adjusts the sensitivity level to optimize motion detection for background noise levels in the video stream.

Easy to deploy

All XProtect Professional VMS Products use the same installer, which simplifies the deployment process.



Did you know?

The Milestone Systems YouTube channel has more than 40 product tutorials, customer testimonials, feature demonstrations and more. Visit www.youtube.com/milestonesys.

Product facts

Number of cameras	26
Maximum number of users	5
Milestone Interconnect	Supported
Milestone Customer Dashboard	Supported

Product highlights

- ▶ Supports all XProtect clients
- ▶ One-layer interactive map
- ▶ System alarms
- ▶ Smart Search video search tool
- ▶ Automatic configuration wizards
- ▶ Pan-tilt-zoom control
- ▶ Built-in motion detection
- ▶ Included one-year Software Upgrade Plan