

# RAYTEC PRODUCTS AT A GLANCE

now including

**FUSION**

Low Voltage Lighting

**rayTEC**<sup>®</sup>

AT A GLANCE

[www.raytecctv.com](http://www.raytecctv.com)

# PRODUCT RANGE AT A GLANCE

## RAYMAX INFRA-RED



300 SERIES  
Up to 370m (1,214ft)



200 SERIES  
Up to 300m (985ft)



150 SERIES  
Up to 183m (600ft)



100 SERIES  
Up to 150m (492ft)



50 SERIES  
Up to 75m (246ft)



25 SERIES  
Up to 20m (66ft)

## RAYLUX WHITE-LIGHT



300 SERIES  
Up to 240m (787ft)



200 SERIES  
Up to 200m (656ft)



150 SERIES  
Up to 150m (492ft)



100 SERIES  
Up to 120m (394ft)



50 SERIES  
Up to 60m (197ft)



25 SERIES  
Up to 20m (66ft)

## FUSION Low Voltage Lighting



RAYMAX 100 SERIES  
Up to 150m (492ft)



RAYMAX 50 SERIES  
Up to 40m (131ft)



RAYMAX 25 SERIES  
Up to 20m (66ft)



RAYLUX 100 SERIES  
Up to 100m (328ft)



RAYLUX 50 SERIES  
Up to 35m (115ft)



RAYLUX 25 SERIES  
Up to 17m (56ft)

**FUSION**  
Adaptive Illumination™  
versions now available

## VOYAGER



VOYAGER 2  
Capture up to  
40m (131ft)



VOYAGER 2 Overview  
Capture up to  
40m (131ft)



VOYAGER 2 LITE  
Capture up to  
18m (98ft)

## HYBRID



HYBRID 300 SERIES  
Up to 300m (984ft)



HYBRID 200 SERIES  
Up to 210m (367ft)



HYBRID 150 SERIES  
Up to 150m (492ft)



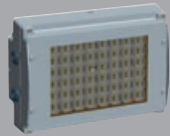
HYBRID 100 SERIES  
Up to 105m (343ft)

# WHY RAYTEC?

## SPECIALIST PRODUCTS



RAYMAX PLATINUM  
Up to 1,000m (3,280ft)



EXPLOSION PROTECTED



PAN AND TILT LIGHTING



IP LIGHTING

## INNOVATION + ILLUMINATION

Raytec manufacture a complete range of lighting solutions for professional CCTV installers – both Infra-Red and White-Light. We also integrate our lighting solutions together with cameras for specialist applications such as Number Plate / Licence Plate Recognition (LPR). Raytec have a track record for delivering innovation in illumination.



### ADAPTIVE ILLUMINATION™

Designed for RAYMAX Infra-Red and RAYLUX White-Light illuminators, Adaptive Illumination™ allows the installer to adjust the angle of the light projection from a single unit to fit the specific demands of any installation. Adjustment is quick and convenient and any angle up to 180 degrees (depending on model) is easily selectable. Adaptive Illumination is patent pending technology available exclusively from Raytec.



### ACTIVE LED LIFE CONTROL

All Raytec illuminators employ cutting edge materials science techniques to improve thermal efficiency throughout the unit and ensure continuity of LED power. The New Advanced Cool Running™ system draws heat away from the LEDs, shielding the LED from abnormal stress, and allows Raytec LED products to deliver outstanding performance and consistency of illumination throughout the operational life of the illuminator.



### 5 YEAR WARRANTY

All Raytec CCTV illuminators are provided with a 5 year warranty, unmatched anywhere in the CCTV lighting industry. Raytec illuminators provide guaranteed long life!



SMT (SURFACE MOUNT TECHNOLOGY)



VANDAL RESISTANT



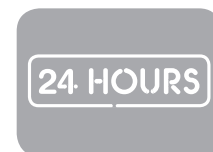
PLATINUM ADVANCED LED TECHNOLOGY



ENERGY SAVING



COMMAND AND CONTROL™ TECHNOLOGY



24-HOUR NUMBER PLATE CAPTURE

# rayMAX INFRA-RED

All Raytec illuminators incorporate the very latest surface mount Light Emitting Diode (LED) technology to deliver excellent night time pictures, with class leading performance and outstanding reliability.

IR - OFF



Product: RM200-AI-10

IR - ON



Distance: 160m+ (524ft)

IR - OFF



Product: RM200-AI-10

IR - ON



Distance: 150m+ (492ft)



## WHY RAYMAX?

### NO LIGHT = NO PICTURE

RAYMAX Infra-Red illuminators are designed to work in conjunction with B&W or Day and Night Cameras providing a light invisible to the human eye but visible to the CCTV camera.

### KEY FEATURES

- Adaptive Illumination™
- Latest Surface Mount LED Technology
- Active LED Life Control
- Angles from 10° to 180° +
- Vandal Resistant
- Low Running Cost
- Zero Maintenance



**Benchmark  
Recommended**  
IFSEC Finalist  
PSI 'Best of 2007'

## APPLICATIONS

WATER RESERVOIRS



INDUSTRIAL PARK



POWER PLANTS



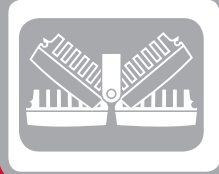
HIGH END RESIDENTIAL



DOME SYSTEM



### 360° Illumination



### DESIGNED FOR DOMES

Raytec Adaptive Illumination is perfect for Domes, with wide angle options up to 180 degrees.

# PLATINUM<sup>®</sup>

**PLATINUM option available on RM300, RM200, RM150 and RM100.  
Boosts distance by up to 25%**



**RAYMAX 300**  
Distance>370m (1,214ft)



**RAYMAX 200**  
Distance>300m (985ft)



**RAYMAX 150**  
Distance>183m (600ft)



**RAYMAX 100**  
Distance>150m (492ft)



**RAYMAX 50**  
Distance>75m (246ft)



**RAYMAX 25**  
Distance>20m (66ft)

## RAYMAX IN ACTION



RM300-AI-50 Perfect for Fully Functional Domes

## WHY INFRA-RED?

### NO LIGHT = NO PICTURE

- Invisible to the Human Eye
- No Light Pollution
- Long Distance illumination
- Designed for CCTV
- Low Running Costs
- Zero Maintenance
- Optimise Camera Performance



#### STANDARD PSU

- Adjustable Power
- Adjustable Photocell
- Telemetry Input

#### PREMIUM PSU

- As Standard Plus...
- 12V DC Output
- Photocell Following Contact
- Perfect for Day / Night Cameras

#### PREMIUM PLUS TIMER

- As Premium plus...
- Variable timer

#### PULSED PSU

- Synchronised LED Pulsing with camera
- 12V DC Output
- Adjustable Power

# rayLUX WHITE-LIGHT

RAYLUX White Light illuminators incorporate Raytec's Platinum technology as standard delivering superior quick start, low energy, visible illumination perfect for CCTV lighting.

WL - OFF



Product: RL200-AI-10

WL - ON



Distance: 75m (246ft)

WL - OFF



Product: RL100-AI-50

WL - ON



Distance: 30m (98ft)



## WHY RAYLUX?

### NO LIGHT = NO PICTURE

RAYLUX illuminators are designed to work in conjunction with colour CCTV systems providing a visible White Light with accurate colour representation for the CCTV camera.

### KEY FEATURES

- Accurate Colour Representation
- Adaptive Illumination™
- Latest Surface Mount LED Technology
- Active LED Life Control
- Angles from 10° to 180° +
- Vandal Resistant
- Low Running Cost
- Zero Maintenance



### APPLICATIONS

PRISONS



DUMPING



INDUSTRIAL PARK



POWER PLANTS



CAR PARK



### LIGHTING ON DEMAND™

All RAYLUX units can be combined with detection technologies to deliver event activated illumination. Combine with PRT – Premium Timer PSU - for timer control and deterrent lighting options.

# PLATINUM<sup>®</sup>

All RAYLUX products are now powered by PLATINUM technology



RAYLUX 300  
Distance > 240m (787ft)



RAYLUX 200  
Distance > 200m (656ft)



RAYLUX 150  
Distance > 150m (492ft)



RAYLUX 100  
Distance > 120m (394ft)



RAYLUX 50  
Distance > 60m (197ft)



RAYLUX 25  
Distance > 20m (66ft)

## RAYLUX IN ACTION



## WHY WHITE-LIGHT?

### NO LIGHT = NO PICTURE

- Optimise Colour Camera Performance
- Achieve Accurate Colour even at Night
- Visible Deterrent to Deter the Criminal
- Quick Start
- Designed for CCTV
- Low Running Costs
- Zero Maintenance
- Can be Multi Purpose



#### STANDARD PSU

- Adjustable Power
- Adjustable Photocell
- Telemetry Input

#### PREMIUM PSU

- As Standard Plus...
- 12V DC Output
- Photocell Following Contact
- Perfect for Day / Night Cameras

#### PREMIUM PLUS TIMER

- As Premium plus...
- Variable timer

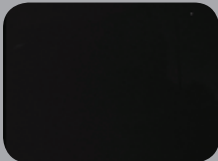
#### PULSED PSU

- Synchronised LED Pulsing with camera
- 12V DC Output
- Adjustable Power

# FUSION Low Voltage Lighting

Fusion is a range of low voltage Infra-Red and White-Light Illuminators designed to improve the performance of any camera system at night. It is easy to install, requires zero maintenance and provides ultra long life.

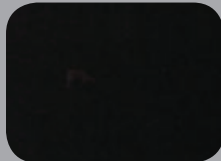
IR OFF



IR ON



WL OFF



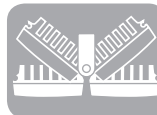
WL ON



## WHY FUSION ?

### KEY FEATURES

- PLATINUM SMT LED Technology
- Distances to 150m (492ft)
- Angles from 10° to 120° +
- 10 Year Life
- No Specialist PSU required
- Vandal Resistant
- Active LED Life Control



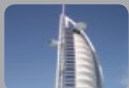
**FUSION**  
Adaptive Illumination™  
versions now available

### APPLICATIONS

MILITARY BASE



HOTELS



POWER PLANTS



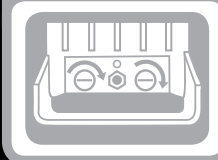
HIGH END RESIDENTIAL



AIRPORTS



COMMAND AND  
CONTROL™



Photocell, photocell adjust, power adjust, telemetry control and low voltage power input integrated directly onto every FUSION illuminator no specialist external PSU needed



# PLATINUM<sup>®</sup>

All FUSION products are powered by PLATINUM technology



RAYMAX 100  
FUSION  
Distance > 150m (492ft)



RAYMAX 50  
FUSION  
Distance > 40m (131ft)



RAYMAX 25  
FUSION  
Distance > 20m (66ft)



RAYLUX 100  
FUSION  
Distance > 100m (328ft)



RAYLUX 50  
FUSION  
Distance > 35m (115ft)



RAYLUX 25  
FUSION  
Distance > 17m (56ft)

## COMMAND AND CONTROL<sup>™</sup> IN ACTION



Photo-cell adjust

Photocell

Power adjust

12/24V  
AC/DC  
input

## WHY LOW VOLTAGE ?

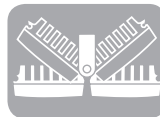
### NO LIGHT = NO PICTURE

- Low Voltage for an easy, cost effective and safe installation.
- State of the art LED illumination using the latest diodes and optical techniques to deliver the best possible images at night.
- A full product family with both Infra-Red and White-Light options means there is a FUSION model suitable for any installation.

PLATINUM<sup>®</sup>  
INSIDE

### PLATINUM ADVANCED SMT LED TECHNOLOGY

PLATINUM illuminators integrate cutting-edge SMT LED technology, light intensification miniature optics and an enhanced Cool Running<sup>™</sup> thermal management system into a single high performance LED. The result is World leading power, reliability and flexibility.



### ADAPTIVE ILLUMINATION<sup>™</sup>

Infra-Red and White-Light versions<sup>™</sup> now available

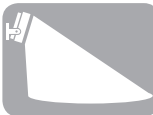


### ACTIVE LED LIFE CONTROL

All Raytec illuminators employ cutting edge materials science techniques to improve thermal efficiency throughout the unit and ensure continuity of LED power. The New Advanced Cool Running<sup>™</sup> system draws heat away from the LEDs, shielding the LED from abnormal stress, and allows Raytec LED products to deliver outstanding performance and consistency of illumination throughout the operational life of the illuminator.

### EVEN ILLUMINATION

High Performance individual LED Optics and holographic diffuser produce an incredibly even light distribution.



FUSION

# VOYAGER 2 - ANPR/LPR CAMERA

All Voyager systems are designed to capture images of the number plate 24 hours a day without any need for adjustment or re-calibration. This includes both bright sunlight and night-time operation.

TRADITIONAL CAMERA



VOYAGER 2



VOYAGER 2  
Capture up to 40m (131ft)



VOYAGER 2 Overview  
Capture up to 40m (131ft)



VOYAGER 2 LITE  
Capture up to 18m (98ft)



## WHY VOYAGER?

### KEY FEATURES

- 24 hr images of number / licence plate
- Purpose designed for ANPR/LPR
- Speeds up to 100 mph+ (165 kmh)
- Distances up to 40m+ (131ft)
- Ray-Vision™ Filtering System
- Intelligent Flash
- Dynamic Overview Camera (optional)
- Platinum SMT Technology



Model shown Voyager 2 Lite

### APPLICATIONS

TOLLS



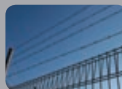
CONGESTION



GATED COMMUNITY



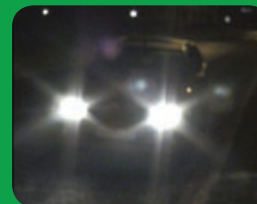
SECURITY



PARKING



### VOYAGER 2 WITH DYNAMIC OVERVIEW



TRADITIONAL OVERVIEW



NIGHT TIME VOYAGER OVERVIEW

# SPECIALIST APPLICATIONS

Raytec are committed to delivering innovative lighting solutions and are happy to discuss your special project requirements.

## PLATINUM<sup>®</sup> HIGH PERFORMANCE



### WHY GO PLATINUM?

#### POWERFUL

- Longest Range - 1,000m+ (3,280ft)

#### FLEXIBLE

- Widest Angle - 180 degrees

#### RELIABLE

- Longest Life - 10 years
- Platinum Hi-Performance Range available in 300, 200, 150 and 100 series

## HYBRID

- Infra-Red for covert surveillance
- White-Light for deterrent
- Distances up to 300m (984ft)



## EXPLOSION PROTECTED

- Explosion protected for hazardous areas
- Distances up to 150m (492ft)
- Available in Infra-Red and White-Light



## PAN AND TILT LIGHTING

- Weight Balanced for pan and tilt systems
- Distances up to 200m (656ft)



## IP LIGHTING

- Operates from PoE
- Distances up to 30m (98ft)
- Infra-Red for covert surveillance



Contact us for other Specialist Applications including...

### MACHINE VISION



### PETROCHEMICAL



### MARINE



### TRANSPORT



### SOLAR



# Illumination for any CCTV application



**INFRA-RED  
LED**



**WHITE-LIGHT  
LED**



**HYBRID IR &  
WHITE-LIGHT**



**LICENCE PLATE  
CAPTURE**

**rayTEC**<sup>®</sup>

UK / Europe  
T: +44 (0) 1670 520055  
F: +44 (0) 1670 819760  
sales@rayteccctv.com

Americas (Toll Free)  
T: +1 888 505 8335  
ussales@rayteccctv.com  
www.rayteccctv.com



**FREE**  
Lighting Support Pack

**Need more information?** The Raytec pack includes a FUSION Low Voltage Lighting Product Guide and the Complete Guide to CCTV Lighting, plus the Raytec DVD with host of useful footage, images and supporting documents.