

SADT-100CM SADT-110CM SADT-100PM

Ceiling Mount / Corner Mount / Pole Mount Adaptor

Summary

SADT-100CM/110CM/100PM is used when installing the indoor/outdoor housing for the SmartDome camera.



Features

SADT-100CM

- Indoor/Outdoor Use
- Solid Structure
- Metallic Material

SADT-100PM SADT-110CM

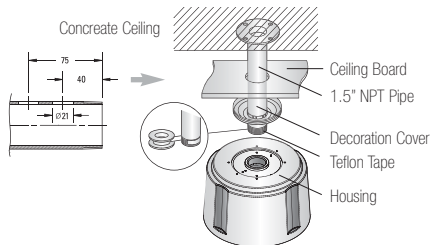
- Indoor or Outdoor Applications
- Supports up to 88 Pounds(40Kg) : SADT-100PM
- Supports up to 97 Pounds(44Kg) : SADT-110CM
- Metal body

Specifications

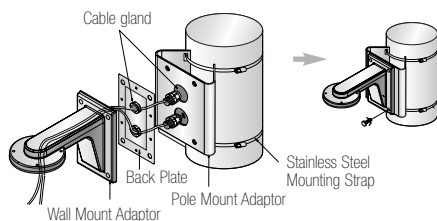
Model	SADT-100CM	SADT-110CM	SADT-100PM
Weight	1.2Kg (including the pipe)	2.1Kg	1.4Kg
Operating Temperature	-40 ~ +50°C		
Operating Humidity	0 ~ 100%		
Accessory	1.5" NPT Pipe(300mm) 1EA Decoration Cover 1EA Cable Gland(PG-13.5) 2EA	Stainless Bolt 4EA Spring Washer 4EA	Stainless Steel Mounting Strap 2EA Stainless Bolt 4EA Spring Washer 4EA

Installation

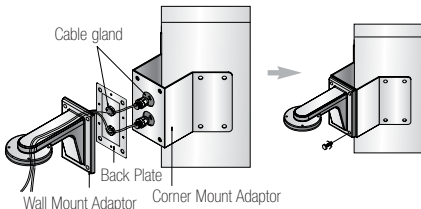
SADT-100CM



SADT-100PM

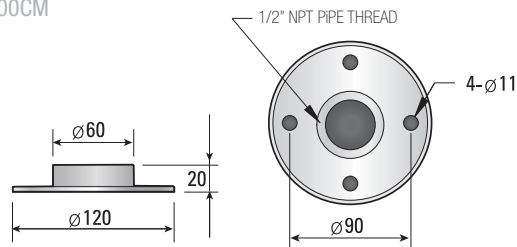


SADT-110CM

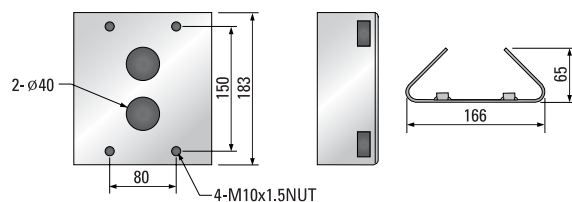


Dimensions (unit:mm)

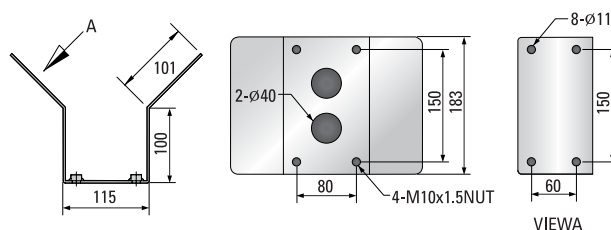
SADT-100CM



SADT-100PM



SADT-110CM



* Conditions for Installation : When installing outdoors, stainless steel must be used for the connecting materials (i.e. screws).