

Connection to WINMAG plus

The free programmability of WINMAG plus enables optimum adaptation to the customer needs. WINMAG plus has an open interface which is especially suitable for connecting to third-party components. For this reason, numerous non-Honeywell components have been connected worldwide via the interfacing possibilities mentioned below to WINMAG plus. Of course, support can be requested for creating the required connections. Above all, WINMAG SDK is suitable for easy creation of connections to 3rd party products.

Interfaces are possible via

- Ethernet TCP/IP
- Serial interface e.g. with MB100, RFW3000
- Honeywell - IGIS-LOOP network (serial/TCP/IP)
- Modem
- "essernet"
- Connection to hardware (connectable control panels)
- Honeywell WINMAG SDK
- OPC-Server/Client
- BACnet Server/Client
- GSM/GPRS

WINMAG plus / how it operates

The operation of the WINMAG plus system is depending on the reception of information from the connected networks, from a modem or from the PC system and the comparison of this information with the states stored in the system.

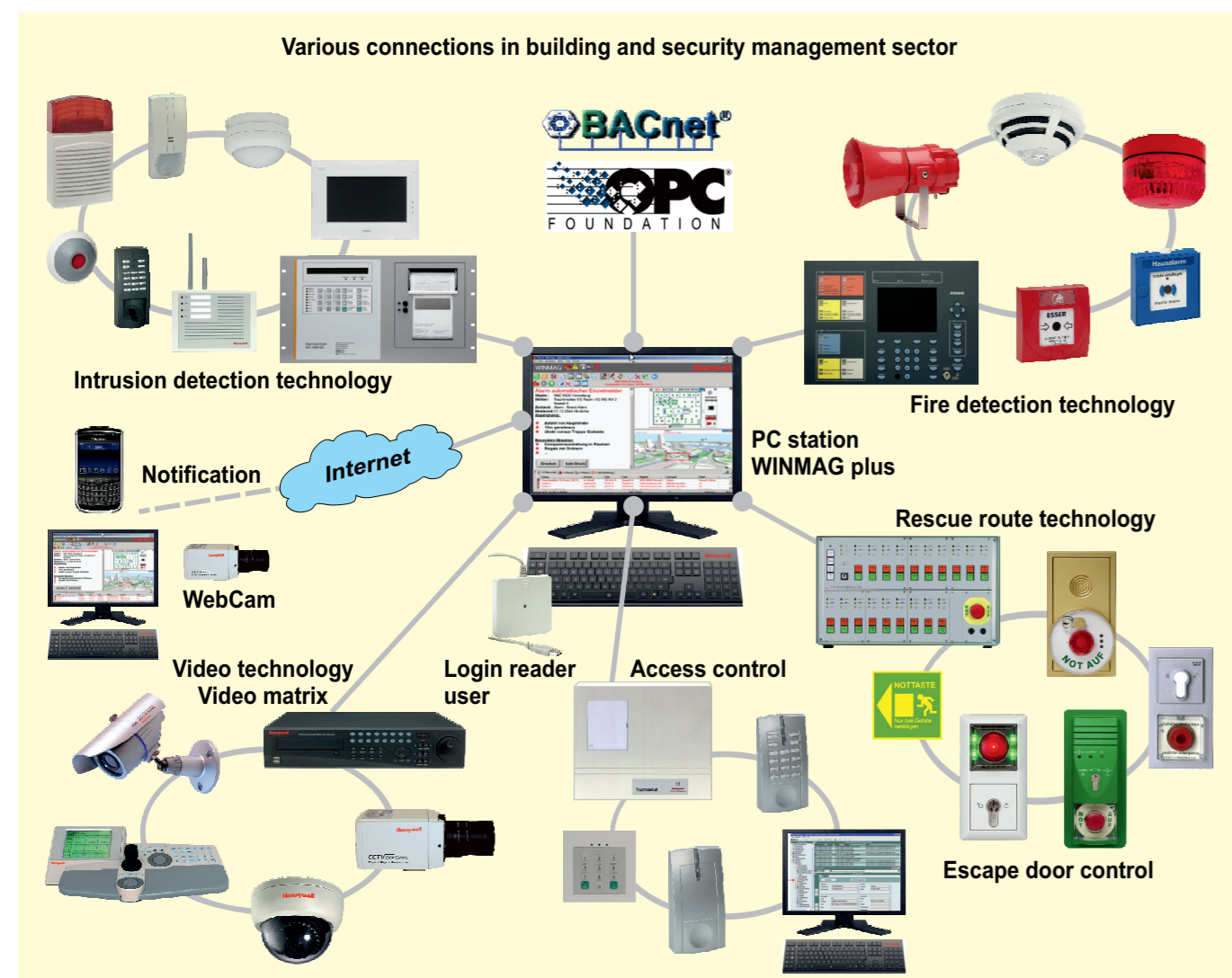
Information can be transmitted via a modem/ISDN-controller or directly from the system itself. For this purpose, various protocols are supported (TCP/IP, shared memory, WINMAG SDK).

WINMAG plus monitors your security system.

The settings are continuously queried. The incoming information is compared with the states stored in the in-memory database.

If an input message fulfills a trigger condition, an individual work flow is started to process this message. In addition to the message evaluation, the individual processing of messages and if necessary, alarm signalling is also possible.

Interactive or automatic control functions can also be handled directly from WINMAG plus, thus enabling immediate and target-oriented implementation of suitable measures for system and hazard prevention.



Order data WINMAG plus

013610 CD control centre software WINMAG plus Standard package

Standard licences

013631 Standard licence WINMAG plus control centre software, USB port

Upgrade packages

013616 Upgrade of a WINMAG installation from Version 6 upwards

013617 Upgrade of a WINMAG installation up to Version 5

013636 WINMAG Lite Upgrade to WINMAG plus full version

013645 Exchange dongle USB instead of parallel

Options

Additional licences

013609 WINMAG plus control centre software subsequent extension

013601 Licence - Intrusion detection technology

013643 Licence / Galaxy EMT connection

013626 Licence - Fire detection technology

013642 Licence / Notifier FDT

013603 Licence - Access control

013604 Licence - Video technology

013605 Licence - Rescue route technology and escape door

013619 Licence - HeiTel video integration

013620 Licence - MaxPRO VMS

013629 Licence - Geutebrück video integration

013632 Licence - Dallmeier video integration

013638 Licence - Honeywell Video

013658 Licence - SeeTec Video

013623 Licence - DEZ 9000 connection

013646 Licence - DS 6750/7700

013608 Licence - WINMAG plus with RDT

Options

013613 Licence - Notification

013650 Licence - Escalation

013651 Licence - DTMF control possibility

013652 Licence - Client processing ability

013653 Licence - Multi-monitor

013659 Licence - 3D Integration

013660 Licence - WEBX

013661 Licence - DTS System

013662 Licence - Login Reader

013655 Licence - Auto-CAD® connection

013656 Licence - Call systems (Nurse)

013624 Licence - Redundancy

013625 Licence - WINMAG plus client

Service

784830 Enter I/O device

784832.10 Enter text page

784833 Enter graphics page

784839 Conversion of a graphics page

WINMAG Developer Kit

013606 Licence - WINMAG SDK

013607 WINMAG SDK Developer Kit

OPC and BACnet

013590 Universal Gateway for PC

013618 Data points packages

013611 Licence - OPC server

013612 Licence - OPC client

013627 Licence - BACnet server

013628 Licence - BACnet client

For further information, please see our product catalogue

Honeywell Security Group

Novar GmbH
Joh.-Mauthe-Str. 14 • D-72458 Albstadt
Tel: +49 (0) 74 31 / 801-0 • Fax: 801-12 20
www.honeywell.com/security/de
info.security.de@honeywell.com

P03126-22-0G0-01
10.2013 - Subject to alterations
©2013 Honeywell International Inc.

WINMAG plus

Security management system



The standard for PC-based security management systems

WINMAG plus is a management system on a PC basis specially designed for the high requirements of security technology.

WINMAG plus manages and controls the following areas of application

- Intrusion detection technology
- Fire detection technology
- Video technology
- Access control technology
- Rescue route technology
- Escape door control
- Building management system

under a uniform user interface.

Databases and user interfaces are configured in accordance with established standards. Messages are displayed as graphics and texts.

Thanks to its open system architecture and the programmability, WINMAG plus adapts dynamically to changes in the system. WINMAG plus copes easily with extensions to the system, so that options e.g. access control or video technology can be installed subsequently at all times.



The integration of an existing or planned building services management system including analog values is easy to realize with WINMAG plus.

Already existing security systems of different manufacturers can be integrated into the WINMAG plus security management system thanks to the open system architecture. When the network and the requirements grow - WINMAG plus grows too. You can therefore be sure that you are investing in a reliable system for the future - an investment that pays off.

Uniform and effective hazard management is an absolute necessity for systems in the industrial and public sector. The Windows management system for hazard detection systems WINMAG plus sets new standards as far as functionality, flexibility and quality are concerned.

Thousands of systems installed throughout the world, underline both the outstanding quality and customer satisfaction.

Performance features at a glance

- Modular management software for security systems
- Visualization of messages
- Direct control of users in the network
- Catalogue of work flows for operators
- Individual assignment of user rights
- Integrated simulation functions

- Extensive recording of events and operations
- Web-based generation of reports
- Integration of video sequences possible
- Time programs/calendar function
- Standard integrated database
- For further features, see inside

WINMAG plus – efficient security management by visual, dialog-guided monitoring

Humans are visual beings

The visual perception and communication is the most effective way of taking information. Visual impressions are processed rapidly and thus enable the implementation of prompt and target-oriented measures.

In the sensitive sector of security management, therefore there is an urgent need to receive information on current states from all areas of the monitored project first and foremost in visual form.

WINMAG plus offers for this very purpose, a modern, user-friendly and easily configurable user interface with extensive standard functions, e.g.

- Alarm stack
- Priority control
- Individual alarm sequences and operations
- Macro functions
- Flexible, window-oriented graphics
- Various user rights
- Connection of peripherals via PC interfaces,
- PC networking and modems (analog and ISDN)
- Open interface to various systems
- Connecting modules to third-party products (control panels, video matrixes, building services management system)
- Individual message evaluation and alarm signalling
- Individual message processing

WINMAG plus can process data from various networks and display then in an individually configurable manner:

- In graphics with dynamic symbols
- In tables
- In individual work flows (alarm programs)
- Print out on up to 10 printers per workplace
- Logging in database and files

WINMAG plus data are stored in a protected, encoded database.

WINMAG plus incorporates a global editing environment and a variety of predefined work flows.

Modular structure for individual solutions

Thanks to its modular structure, WINMAG plus offers the appropriate solutions for every size of system and for every area of application.

Ranging from WINMAG plus standard package for single-station systems to multi-station systems with incorporation of various networks.

The WINMAG plus software comprises several articles based on the WINMAG plus standard package on CD. This standard package serves also as a demo version.

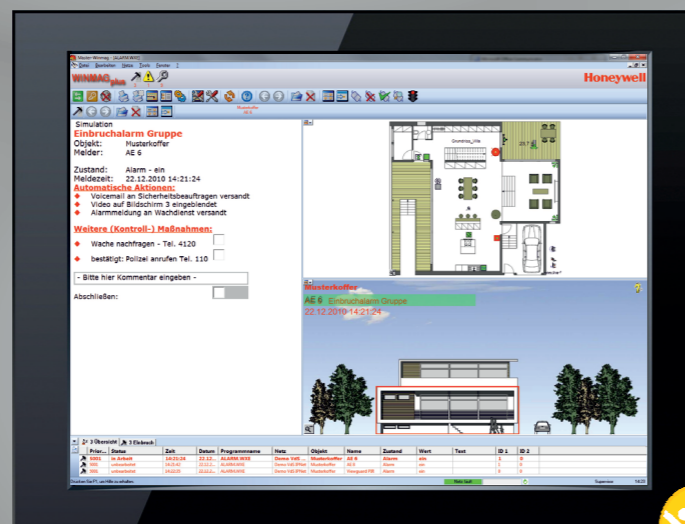
The base licence enables activation of the standard package or the demo version to run as unlimited visualization software on the server workstations and on clients in the network.

The individual options can be ordered separately as an addition to the standard licence.

The alarm window

Every alarm program is executed in a window that can be equipped with its own header and button bar. The buttons are used to control the alarm program sequence.

Up to 10 alarm programs can be processed simultaneously independent of one another. The alarm stack can cope with up to 1000 inputs that are sorted dynamically according to priority. The design and appearance of an alarm program is freely definable and can be adapted to various requirements.

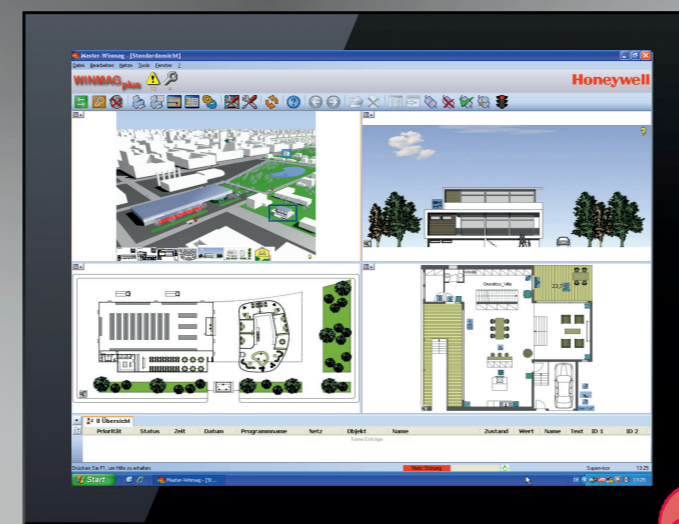


3D integration as an option

The 3D integration (option) by using a 3D engine enables the representation of 3D models for better receive of system state information and relevant alarm details. It is displayed in the overview window as well as in partial view and shows the location and size of objects in a detail view.

This is possible within the entire graphics or in partial views of a complex plant or a part of a real estate.

The 3D view allows a optimum of visual perception of the reality and therefore a optimised admission of information.



The standard view

A special form of the graphic background window is the "Standard view". WINMAG plus can be represented as a full screen or as a window on the desktop. The WINMAG plus program divides the program window into several areas. The program background can be set accordingly.

WINMAG plus is suitable for „Multi-monitors“ and can run on up to 4 monitors simultaneously.



The graphics window

Enables the display of drawings in a structured tree as well as the integration of active and dynamic graphics in a basic graphic (graphic in graphic).

For representing symbols incl. dynamic display of detectors and system properties. Starting macros or pop-up programs via symbols. Display of "Quick Info" on drawing references and symbols.

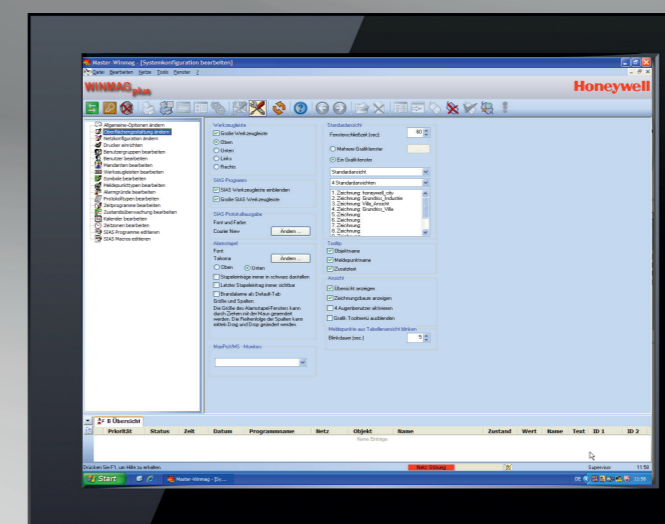
The multiview window

Enables the display of up to 12 windows on a monitor. All windows are displayed next to one another and are identical in size. The automatic zooming of graphics to the size of the window enlarges the view accordingly. The example shows a window with a live video imagery.



System configuration window

The "System configuration" contains functions for the configuration of networks, objects, I/O devices, types, alarm reasons, symbol structure, users, buttons, printer allocation and system settings. Only those options are displayed to which the respective user is entitled.



Further performance features

- Free programmability
- Login with ID data carrier possible
- Flexible, window-oriented graphics
- Display and location of detectors in graphics
- Display of current situation
- Polygon image references for perspective drawings
- Control of video matrixes
- Start of other programs from WINMAG plus
- High-performance programming language SIAS for
 - customer-specific adaptation of interface
 - determination of sequences in the event of an alarm
- Remote control via modem or ISDN possible
- Access to other databases via ODBC
- Honeywell systems can be integrated - ESSER, Notifier, Fusion 4, HRDP / HRDP H.264, Galaxy Dimension
- Integration of HeiTel, NICE, Geutebrück GeViScope, Gevisoft, SeeTec and Dallmeier
- Integration of transmission devices DS 6750 (IP/PSTN) or DS 7700 (IP/ISDN) for direct connection to external systems
- Integration of QVisitor for the management of visitor IDs in conjunction with IQMA
- Path-time calculations in conjunction with IQMA
- Extension of logging - generation of reports directly from WINMAG plus, unlimited report period by back-up functionality as well as export and import of reports
- Compatible with Windows 32-/64 bit systems
- 3D integration (option) with powerful 3D engine for integration of .3dm, .kmz and .dae files, other formats on request
- Notification module with the functions SMS, E-Mail, and Voice Mail dispatch
- High failure security thanks to multiple redundancy
 - 2nd PC with identical data in the network
 - 2 transmission paths
- Connection possibilities via open interfaces
 - OPC-Server / Client
 - BACnet-Server / Client
 - WINMAG SDK
- Connection via Ethernet (TCP/IP) e.g. VdS IP network
- Connection to EIB possible
- Parameterization possible when running

Note:
To benefit from specific performance features, corresponding options must be used.