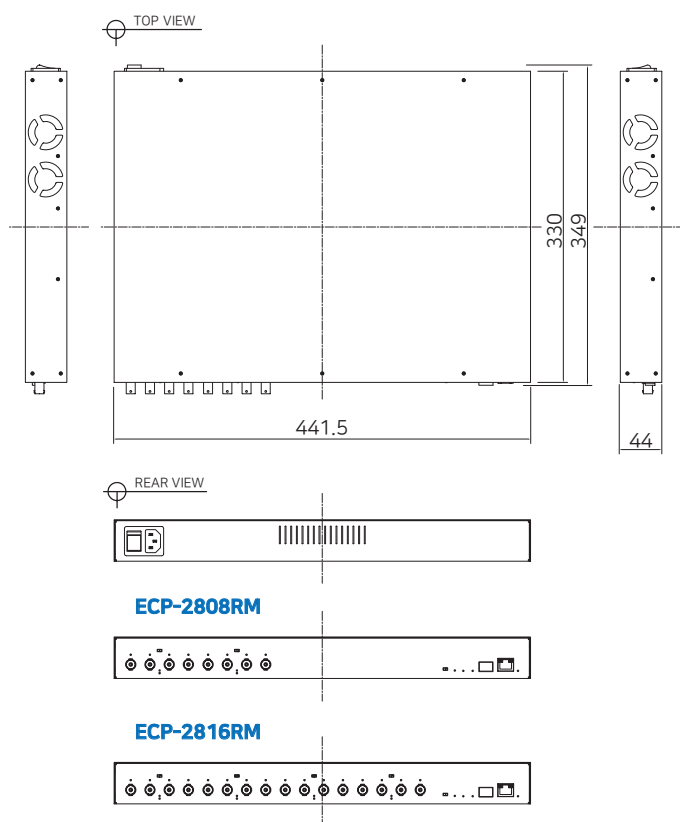


ECP-2808RM/2816RM

► Premium 8/16 Port Ethernet over Coax Managed Receiving Switch (NMS)



Dimension



Overview

The All-New Intercoax ECP-2808RM/2816RM are 19" rack mountable Managed Long Distance Ethernet and PoE over Coax Receiving Switches. ECP-2808RM/2816RM are available with 8 or 16 B-Linx(Coax) ports.

ECP-2808RM/2816RM are capable of connecting more than 8/16 ECP Transmitters even with Daisy-Chain connection and also support PoE powered devices such as IP cameras. Data rates up to 1Gbps are achievable, making these devices the ideal choice in new or legacy installations where existing coax cable is re-deployed as part of an upgrade from Analog to IP cameras.

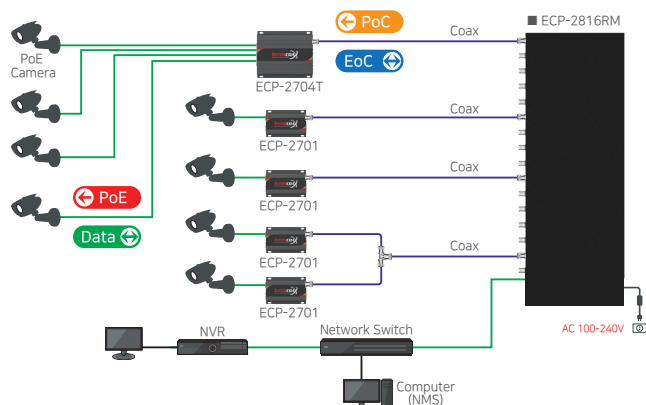
ECP-2808RM has built-in 320 Watt power supply and ECP-2816RM has built-in 640 Watt power supply.

Browser based GUI manages all connected IEEE1901-HPAV standard devices. Furthermore, the world first innovative "Intercoax ECP Manager" software allows managing multiple of ECP-2808RM /2816RM remotely from central management office.

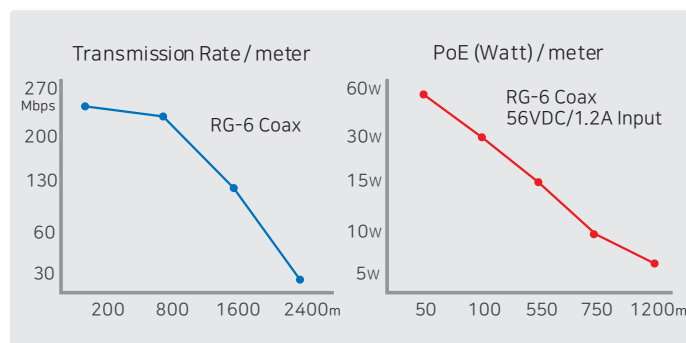
Features

- Total management software, "Intercoax ECP Manager Full version" included
- Friendly Graphic User Interface with EasyView can easily access and monitor multiple ECP-2808RM/2816RM
- Configure Join & Unjoin, Changing joining password and power reset of remotely connected devices
- Real-time monitoring of power consumption for each port
- Multicast Setting with IGMP Query & Report Generator
- SNMP/SSH
- VLAN/QoS
- Port Locking by MAC Addresses
- Alarm LED & buzzer built-in switch and notification on ECP Manager
- Scheduled event reporting and alert reporting to designative users
- Back up & Restore of configuration
- 8/16 Port long distance EoC up to 2.4Km
- PoE/ PoE+/ Extra PoE up to 60W (PoE++) per B-Linx port
- Each port has Auto Power Short Protection. When the cable is being shorted or damaged, it won't transmit power until the cable is fixed
- B-Linx Device Detection will secure the power transmission only to B-Linx devices
- 320W / 640W Built-in Power Supply
- Built-in crosstalk cancelling technology
- B-Linx Multiple Nodes can be used (Daisy Chain, Star, Etc.) on each port
- All IEEE1901-HPAV standard EoC devices can be easily connected remotely
- 19-inch(1U) rack mountable design
- Giga-bit SFP and Copper uplink port
- Supports UTP, Telephone (2 Pairs), 2-Wire cable communication (Using BTE Series)
- Surge Protection

Connection Diagram



Performance chart



► The test result was conducted using ECP-2701 as transmitter.

ECP-2808RM/2816RM

Specification

Model		ECP-2808RM	ECP-2816RM
Interface	Coax	8 x 75Ω BNC (Female) - Ethernet over Coax (B-Linx)	16 x 75Ω BNC (Female) - Ethernet over Coax (B-Linx)
	Up-Link	1 x RJ45 - 10/100/1000 Base-T with Auto MDIX, 1 x SFP - 1000 Base-T	
B-Linx / T-Linx Transmission Rate (Ethernet over Coax/UTP)		UP to 560Mbps Full Duplex	UP to 1Gbps Full Duplex
B-Linx / T-Linx Communication Standard		IEEE1901-HPAV	
B-Linx / T-Linx Communication Modulation		OFDM	
B-Linx / T-Linx Communication Multiple Nodes (Daisy Chain)		2 remote transmitters per port recommended (Max up to 4 per port)	
ECP Manager Connectivity		Available	
IGMP		IGMP (V1/V2/V3) Snooping, IGMP Query & Report Generator	
Data Transmission Distance	Coax	Up to 2.4Km (RG6)	
Power Transmission Distance	Coax	Up to 1.2Km (RG6 / 7W)	
LED Indication	Power	1 x Blue	
	RJ45 Up-Link	1 x Green (10/100-Link) / 1 x Yellow (1000-Link)	
	SFP Up-Link	1 x Green (1000-Link)	
	Port	8 x Green	16 x Green
	Join	2 x Green	4 x Green
	Alarm	1 x Red	

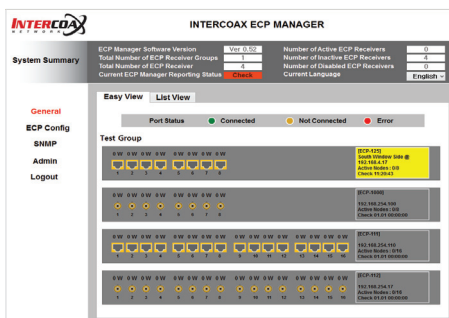
Model		ECP-2808RM	ECP-2816RM
Buzzer	Event	Buzzer / Mute	
Encryption		128-bit AES	
Power	AC Input	AC100V-240V (50Hz/60Hz), 320W / 640W	
	DC output per Port	Max DC 57V (Max. 60W per port for PoE support)	
	Port Short Protection	Auto Detection & Protection	
Smart B-Linx / T-Linx Device Detection		Detection On / Off	
Mechanical	Dimension	441.5(L) x 330(W) x 44(H)mm	441.5(L) x 330(W) x 44(H)mm
	Weight	5,160g	5,600g
Environment	Operating Temp	-10~ 60°C	
	Storage Temp	-30 ~ 80°C	
	Relative Humidity	10% ~ 80%	
Compliance	Certification	CE (including Railways Standard EN 50121-4), FCC, KC	
	Surge Protection	IEC61000-4-5 4kV(1.2 / 50us), 2kA(8/20us)	

- Multi-Port devices may have different bandwidth and power current for each port depending on number of connected cameras.
- Transmission distance may vary depending on the type and quality of cable, use of power and environmental condition.
- Distance is based on RG-6 coax cable and 7 Watt IP Camera.

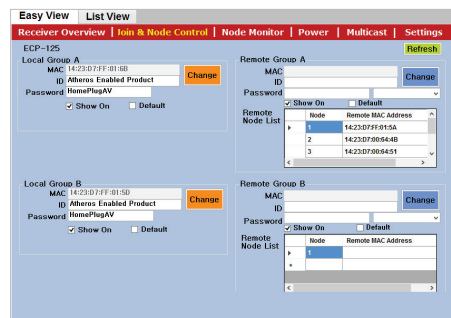
2808RM / 2816RM Software ► INTERCOAX ECP Manager

Professional management software for real-time monitoring, configuration and remote access.

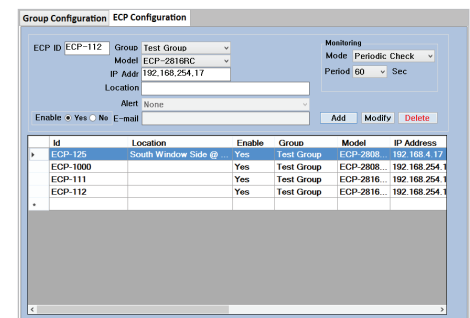
User Friendly GUI with Multiple 2808 / 2816 Series



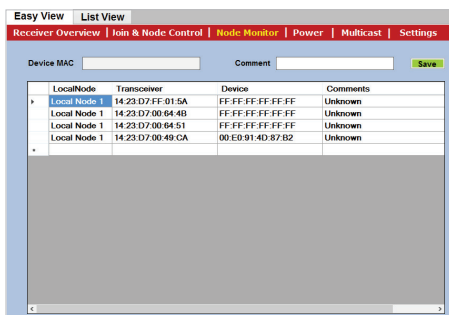
Remote access to connected devices and software based Joining



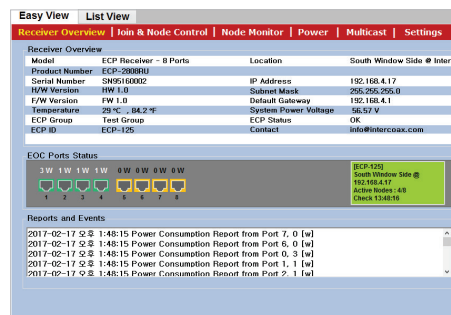
ECP Configuration of Multiple 2808 / 2816 Series



Remote device monitoring



Receiver Overview of selected 2808 / 2816 Series



Power Status with history & Port reset

